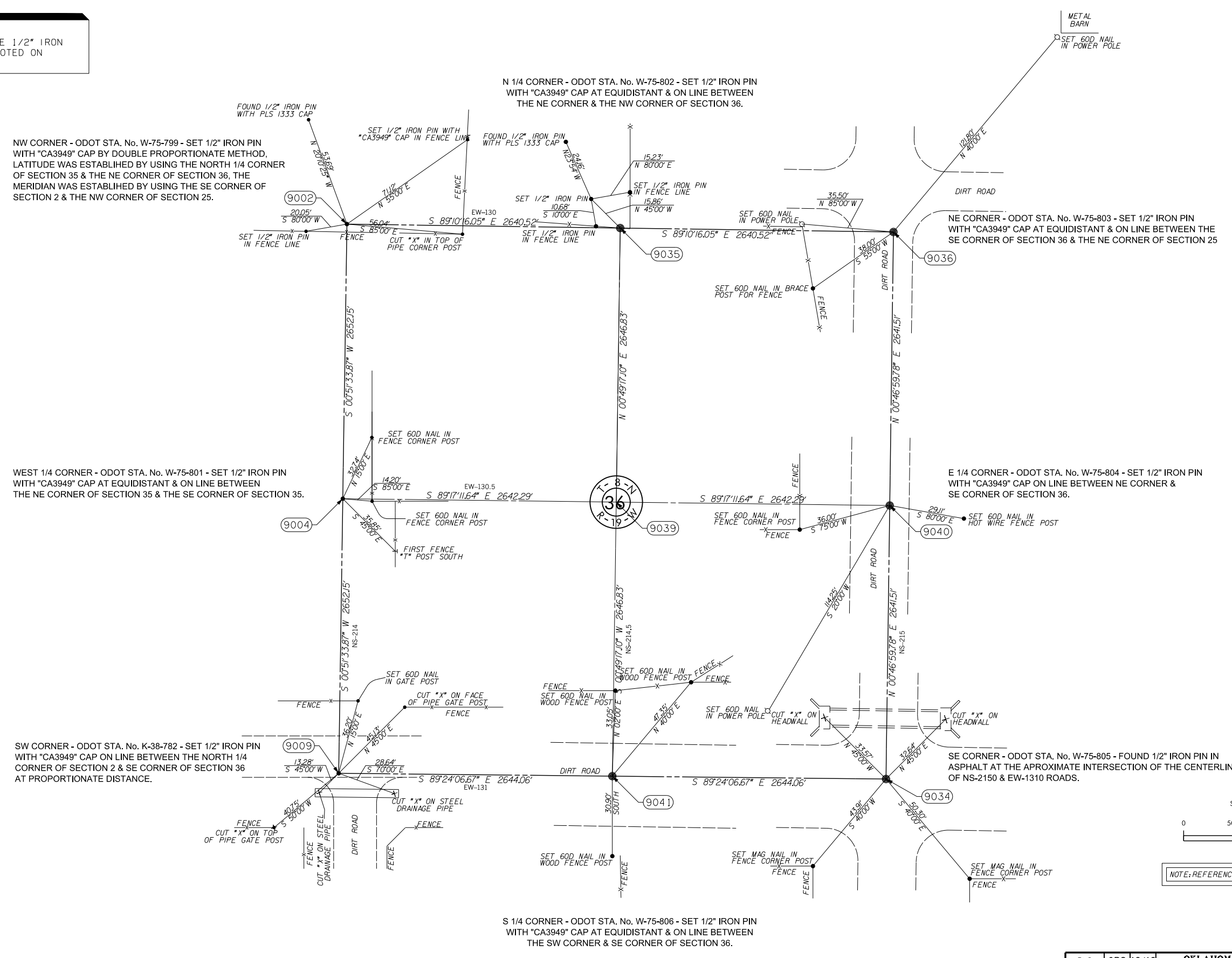


OKLAHOMA DEPARTMENT OF TRANSPORTATION					
FED. ROAD DIST. NO.	STATE	JOB PIECE NO.	FISCAL YEAR	SHEET NO.	TOTAL SHEETS
	OKLA.				
DESCRIPTION			REVISIONS	DATE	

NOTE:
ALL REFERENCE POINTS ARE 1/2" IRON PINS UNLESS OTHERWISE NOTED ON SURVEY.



NW CORNER - ODOT STA. No. W-75-799 - SET 1/2" IRON PIN WITH "CA3949" CAP BY DOUBLE PROPORTIONATE METHOD. LATITUDE WAS ESTABLISHED BY USING THE NORTH 1/4 CORNER OF SECTION 35 & THE NE CORNER OF SECTION 36, THE MERIDIAN WAS ESTABLISHED BY USING THE SE CORNER OF SECTION 2 & THE NW CORNER OF SECTION 25.

N 1/4 CORNER - ODOT STA. No. W-75-802 - SET 1/2" IRON PIN WITH "CA3949" CAP AT EQUIDISTANT & ON LINE BETWEEN THE NE CORNER & THE NW CORNER OF SECTION 36.

NE CORNER - ODOT STA. No. W-75-803 - SET 1/2" IRON PIN WITH "CA3949" CAP AT EQUIDISTANT & ON LINE BETWEEN THE SE CORNER OF SECTION 36 & THE NE CORNER OF SECTION 25.

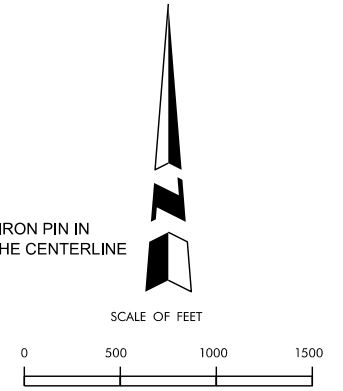
WEST 1/4 CORNER - ODOT STA. No. W-75-801 - SET 1/2" IRON PIN WITH "CA3949" CAP AT EQUIDISTANT & ON LINE BETWEEN THE NE CORNER OF SECTION 35 & THE SE CORNER OF SECTION 35.

E 1/4 CORNER - ODOT STA. No. W-75-804 - SET 1/2" IRON PIN WITH "CA3949" CAP ON LINE BETWEEN NE CORNER & SE CORNER OF SECTION 36.

SW CORNER - ODOT STA. No. K-38-782 - SET 1/2" IRON PIN WITH "CA3949" CAP ON LINE BETWEEN THE NORTH 1/4 CORNER OF SECTION 2 & SE CORNER OF SECTION 36 AT PROPORTIONATE DISTANCE.

SE CORNER - ODOT STA. No. W-75-805 - FOUND 1/2" IRON PIN IN ASPHALT AT THE APPROXIMATE INTERSECTION OF THE CENTERLINE OF NS-2150 & EW-1310 ROADS.

S 1/4 CORNER - ODOT STA. No. W-75-806 - SET 1/2" IRON PIN WITH "CA3949" CAP AT EQUIDISTANT & ON LINE BETWEEN THE SW CORNER & SE CORNER OF SECTION 36.



NOTE: REFERENCE'S SHOWN ARE NOT TO SCALE.

PLS	CRS	12/12	OKLAHOMA DEPARTMENT OF TRANSPORTATION SURVEY DIVISION		
DRAWN	TDL	12/12	 SMITH ROBERTS BALDISCHWILER, LLC 100 N.E. 5th Street Oklahoma City, OK 73104 Telephone: (405) 840-7094 Fax: (405) 840-5916 SURVEY DATA SHEET		
CHECKED	JAC	12/12			
APPROVED	CRS	12/12			
CREW	BC, SG, BH	SWO 4836 (1)			
PROJECT NO. 28999(Q4) SHEET NO. SD 12					